

Farm Retirement

LOCATION: 67353 240TH ST., JOHNSON, MN 56236  
From Johnson, MN, 1/2 mile west on MN 28, 1 mile south on Co Hwy 21, 1/4 mile west on 240th



# AUCTION

OPENS: MONDAY, AUGUST 24

CLOSES: WEDNESDAY, SEPTEMBER 2 | 1PM 2020

AUCTIONEER'S NOTE: Brian and Jenny have rented their land out and are discontinuing their farming operation. It gives Steffes Group great pride to offer up an exceptionally clean line of mostly shedded equipment in above average condition. Machinery will be available for viewing and inspection a couple weeks before the online only auction and Brian is available by phone in the evenings for questions.

PREVIEW: BY APPOINTMENT  
LOADOUT: BY APPOINTMENT

## TRACTORS

2009 Case-IH 275 Magnum MFWD, red leather heated seat, powershift, 18 spd, 4 hyd., 3 pt. quick tach, 540/1000 PTO, Pro 700 monitor w/AutoTrac, 372 GPS receiver, AM/FM, power mirrors, HID lights, PTO/3 pt. control, suspended front axle, rear fenders, 380/80R38 front dual tires, 380/90R54 rear dual tires, 4,193 hrs. IHC 966 2WD, cab, diesel, 2 hyd., 3 pt., TA works, 540/1000 PTO, rock box, 18.4x34 rear dual tires, approx. 7,400 hrs., second owner, new alternator, new fuel pump, recent engine history

## PLANTER

2001 John Deere 1710 vacuum planter, 12x30", vertical fold, 1.6 bu. boxes, liquid fertilizer, John Blue pump, Precision eSet, air force, hyd. variable rate, 20/20 monitor, Yetter row cleaners, lift assist wheels, Redball monitor, corn & bean plates, markers

## TILLAGE EQUIPMENT

2008 Wilrich 657 DCR disc chisel, 24', 19 shank, hyd. discs, 3-bar heavy harrow, 11L15 tires  
2009 Summers Super Roller land roller, 45', 12.5Lx15 tires  
2008 Case-IH TigerMate 200 field cultivator, 50-1/2", 6" sweeps (near new), double fold, rear hitch, 4-bar harrow, 11L15 walking tandems, 12.5L15 tires on main frame  
IHC 183 row crop cultivator, 12x30", 3 pt.

## TRUCKS

2010 Mack CHX613 day cab semi, MP8 Mack, 415 hp., Allison 6 spd. automatic trans., air ride cab, air ride seat, air ride suspension, A/C, tilt, cruise, diff lock, power windows & mirrors, fixed 5th wheel, single aluminum tank, stainless steel 1/4 fenders, 191" WB, 11R22.5 tires on aluminum wheels, 529,109 miles, pre DEF, New batteries  
1984 Mack R model semi, 300 Mack, 10 spd. trans., spring ride, air slide, dual tanks, 204" WB, 11R22.5 front tires on aluminum wheels, 11R22.5 rear tires on Dayton wheels  
1978 Mack R model semi, 300 Mack, Mack 5 spd., 11R24.5 front tires, 10:00x20 rear tires, been in a wreck, for parts or rebuild  
1984 Ford F150 XLT pickup, long box, 4 spd. manual trans., 2WD, 109,647 miles



## TRAILERS

2014 Timpit Super Hopper hopper bottom trailer, 40', 72" sides, ag hoppers, air ride, roll tarp, air scale, 2 rows of 3 lights, 24.5 tires on aluminum outside wheels  
2013 PJ tilt deck trailer, 20', 2-5/16" ball, rub rail, 7,000 tandem axles, 235/80R16  
2007 PJ gooseneck trailer, 32', beaver tail, wood deck, rub rail, 3-piece spring assist ramps, 12,000 axles, 235/80R16 duals  
2012 Horst header trailer, 30', 4-wheel, 11L-15 tires  
Fuel transfer tandem axle trailer, 600 gal., Honda 5.5 hp. gas powered pump, auto shut-off, baffled filters, low profile, pintle hitch, 225/75R16 tires

## SPRAYER

2008 Top Air pull-type sprayer, 90', 1,200 gal. tank, rinse tank, induction cone, fence row nozzles, & 3 position nozzles, hyd. pump, Raven monitor, foam markers, adjustable axles, 380/90R46 tires

## GRAIN CART

2010 J&M 1051 grain cart, 22" corner auger, roll tarp, scale, (2) cameras, rear hitch, 900/60R32 singles

## GRAIN HANDLING EQUIPMENT

2004 Sukup continuous flow dryer, 16', single phase, single fan, stainless steel screen, Sukup auto controller, 3,070 hrs., Bought new  
2013 Batco PS1800 drive-over conveyor, hyd. lift, 10 hp. single phase electric motor  
Friesen 240 belt conveyor seed tender, 160 Honda motor, roll tarp  
2003 Westfield auger, 91'x13", low pro swing hopper  
Westfield auger, 56'x8", 7.5 hp., single phase  
Westfield auger, 31'x8", 7.5 hp. single phase electric, 3' extension  
Westfield auger, 31'x10", 10 hp. single phase motor  
1995 Westfield MK100-61 auger, 61'x10", 540 PTO, swing hopper

## SKID STEER LOADER & ATTACHMENT

2012 Bobcat S650 skid steer loader, cab, heat, 2 spd., aux. hyd., power Bob-Tach, material bucket, 12-16.5 tires, 2,850 hrs.  
Bobcat pallet forks, 48"

## TANKS

Demco Side quest saddle tanks, 1,000 gal., w/mount for front duals, off of 275 Magnum  
Demco inline saddle tanks, 600 gal., off of MX240  
AgChem saddle tank, 500 gal.  
(2) Ace Roto Mold poly tank, 2,000 gal., 2" plumbing, black  
(4) Poly tank, 1,500 gal.  
Poly tank, 1,600 gal.  
Fuel barrel, 500 gal., w/pump, white

## OTHER FARM EQUIPMENT & SUPPORT ITEMS

2013 Eagle pull-type rotary ditcher, 1000 PTO, right or left discharge  
Melroe 600 rockpicker, 205/75R15 tires  
Shop-Built side dress bar, 12x30", 3 pt., John Blue ground drive pump, Yetter ripple coulters  
Flail chopper, 15', 1000 PTO, hyd. lift  
Banjo poly pump, 2" w/hose  
Ace Roto Mold inductor, 30 gal.  
Ace Roto Mold inductor, 40 gal.  
Case-IH Category III quick tach, 3 pt.  
4-wheel running gear, 12.5L-15 tires

## PARTS & TIRES

Pallet of John Deere planter parts  
Misc. parts includes springs, cover, bolts  
(2) Totes of misc. parts  
Pallet of misc. parts  
Pallet of spring loaded shanks  
(2) Firestone 18.4-38 tires



**BRIAN & JENNY WULFF**  
BRIAN, 320.760.1881

or Scott Gillespie at Steffes Group, 320.693.9371 or 320.760.3066

# SteffesGroup.com

Steffes Group, Inc. 24400 MN Hwy 22 S Litchfield, MN 55355 | 320.693.9371

Complete terms, lot listings and photos at SteffesGroup.com

Ashley Huhn MN47-002, Eric Gabrielson MN47-006, Randy Kath MN47-007, Scott Gillispie MN14-30, Shelly Weinzettl MN47-017, Scott Steffes MN14-51.





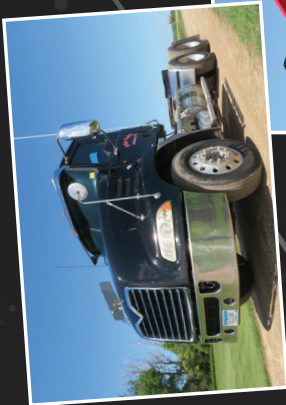
Built on Trust.

*Farm Retirement*

# AUCTION

**CLOSES: WEDNESDAY, SEPTEMBER 2 | 1PM**

**67353 240th St., Johnson, MN 56236**



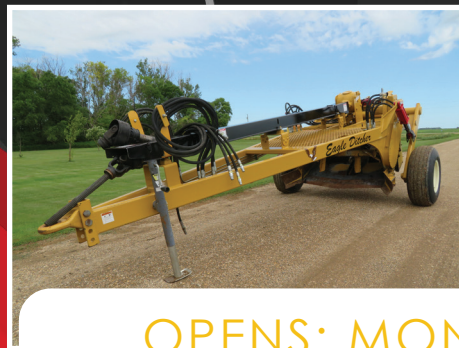
Steffes Group, Inc.,  
24400 MN Hwy 22 S,  
Litchfield, MN 55355



PRESORTED  
FIRST CLASS  
US POSTAGE  
**PAID**  
PERMIT #315  
FARGO, ND

*Farm Retirement*

# AUCTION



**OPENS: MONDAY, AUGUST 24**  
**CLOSES: WEDNESDAY, SEPTEMBER 2 | 1PM** 2020

**SteffesGroup.com**

